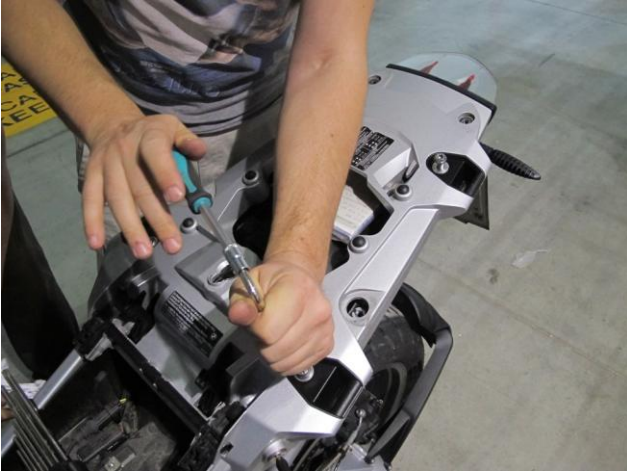


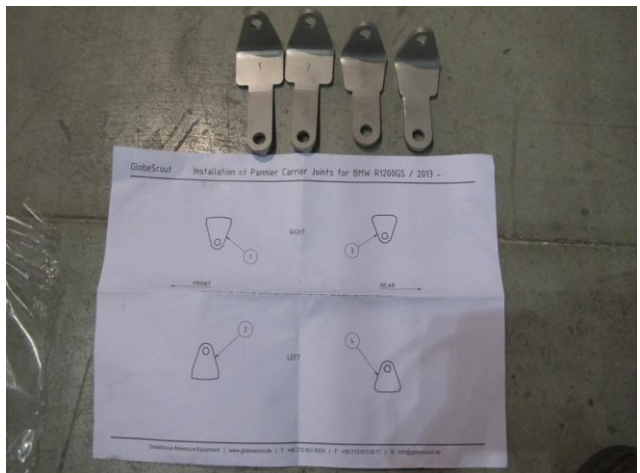
Mounting Instructions
of
Side Case Pannier Carrier
and
Topcase Bracket
for
BMW R1200GS 2013+

Mounting the side case carrier

1. Unscrew the 4 bolts shown in the picture.



2. Open the package with all the hardware inside and separate the 4 joint parts with numbers on back sides.



3. Place the joint parts according to the numbers and the mounting plan. Screw the original bolts back again.



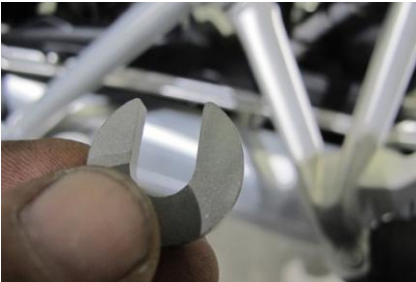
4. Unscrew the 2 bolt for the rear passenger pegs on both side approx. 6-7mm.



5. Place the arm of the side carrier to the rear bolt.



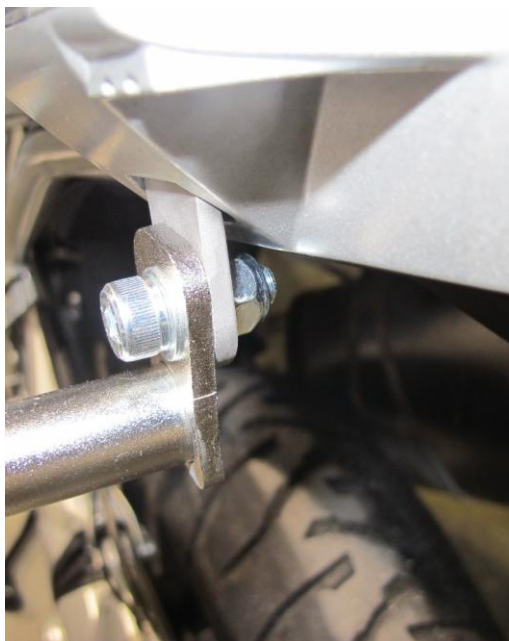
6. Place the U-Form washer to the front bolt tighten the bolts slightly.



7. Mount each side carriers with the two top screw points and tighten slightly.



8. Mount the traverse and tighten all bolts firmly.



Mounting the topcase bracket

1. Find the two reinforcement parts and 4 thin and 2 thick aluminium washers.



2. Place the two thin alu. washers (3mm.) as shown in the picture.

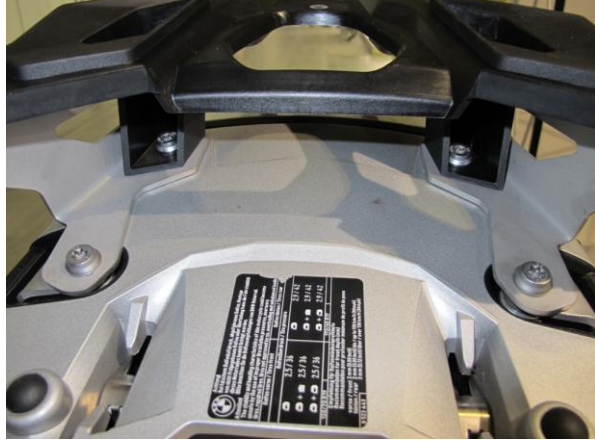


3. Position the two reinforcement parts as shown in the picture.



4. Place the black support part on the bike and screw the four bolts.

Note : If no side case carrier is mounted, place the thick aluminium washers (5mm.) under the front holes of the reinforcement parts. If the side case carriers is mounted, this washers will not be used.



5. Place the other 2 thin alu. washers (3mm.) as shown in the picture and place the rear passenger handlebar carefully to the bike. Left and right screws simultaneously. Pay attention that the washers do not fall inside the rear section of the bike. If so, you can pick them up after you remove easily the big grey cover.



6. Check the correct position of the handle bar with the black plastic support.



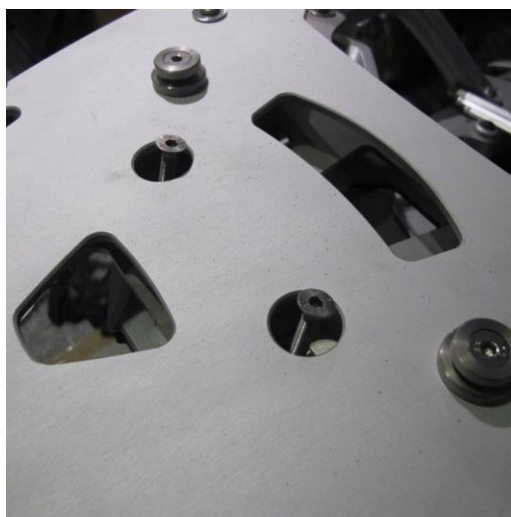
7. Place the long aluminium washers (15mm) in front and the short ones (10mm) in the back.



8. Set the front screws and washers and tighten slightly. (M6x50)



9. Set the rear screws (M6x65) with the special washers and tighten carefully but **not completely**.



10. Place the distance parts (Dia.18 x 18mm) as shown in the picture.



11. Now screw the rear bolts completely and tighten firmly.



12. Set the washers and nuts (M6) for all front and rear bolts and tighten firmly.

